

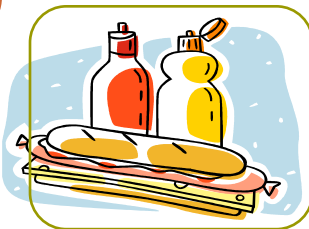


“Lunch 2 Go” Program

THANKS FOR VOLUNTEERING!

Program Purpose:

For many years, the Ronald McDonald House has provided the residents with the very valuable Family Dinner Program. Now, RMH is extending the food program to include sack lunches that residents may put together and take over to the hospital with them.



What Do I Do?

Contact Ronald McDonald House to schedule a date. Then...

- Purchase standard lunch items – ideas include sandwich fixings, juice boxes, fresh fruit, granola bars, chips, dessert, paper lunch bags, napkins, etc
- The night before, set out the non-refrigerated items on the buffet table in the 3rd floor dining area. Pre-make sandwiches, label them individually with sandwich type and date, and place in the refrigerator.
- Prepare enough for 25 - 30 lunches
- RMH will communicate the next ‘Box Lunch’ date with residents

To schedule your group or for more details about the Family Dinner Program call Vicki Alauf at 414-475-5333 ext. 108 or e-mail: familydinner@rmhcmilwaukee.org

RONALD McDONALD HOUSE CHARITIES